



SOUND BOARD

JUNE 1983 VOL. 1, NO. 2

A REVIEW OF NEWARK AREA ENTERTAINMENT

From the Editor,

No one can say there is nothing to do in the Newark area, and June is the month to top all months. Baseball is back. So is the Land of Legend Festival, which has scheduled almost three weeks worth of entertainment. It's also time to get the bicycles out.

I plan to use larger type for the Calendar in the near future, but the sheer length of it this time precluded that change. There is so much! Look it over. Hold onto it throughout the month to help you decide what to do and where to go.

I want to thank the following people for their help, encouragement, advice, and patience in getting Soundboard off the ground: Concha, Rhonda, Linda, Mike R., Rickie, Michelle. Leah. Robbu. Amu. Heather. Julie. Natalie. Ellen. Kathy, Kyle, Jimmy, Joe, Gary, Toni (San Antonio), Penny, Ray, Velva, Mike L., Mike B., Dave, Milea, Laura, Boots, Karen, Beth, Carol (So. Carolina), Terry, Bob, and Rachel.

Dan Fleming



THE Land of Legend Festival



1983

BIGGER AND BETTER

THEME: THE SCENIC RAILROAD

JUNE 1-5 CARNIVAL
JUNE 5-19 FESTIVALS AND SHOWS

Food
Parade
Celebrities

Come out and see Newark
Live Music

Games
Carnival
Flea Markets

INDEPENDENCE WEEKEND AT RAIL FENCE PARK

Normally, Soundboard will restrict itself to the local scene of Licking County, but there's bluegrass in the air for this summer, so we'd like to prime you with the 9th Annual Independence Weekend festival at Rail Fence Park, Mt. Gilead, Ohio on July 1-3.

Only at a bluegrass festival are there more performers in the audience than on stage. At Rail Fence the talent in the jamming sessions is awesome. Many serious bluegrass musicians hone their craft at the festivals, but earn their livelihood as doctors, dentists, farmers, and factory workers.

The festival is co-sponsored by the Mt. Gilead JAYCEES and BUDWEISER. Advance tickets have moved at a brisk pace since March. The gate price for 3 days camping and 30 hours music is \$15 per adult, with children under 12 admitted free. Single day tickets are available: Fri. \$4, Sat. \$6, and Sun. \$8. This allows an inexpensive mini-vacation with great music by The John Herald Band, J.D. Crowe and the New South, Doyle Lawson and Quicksilver, Don Reno and the Tennessee Cutups, Ronnie Reno, Doc Hult, Jon Rogers and Rushmore, Trade-N-Post, Full House and Sugar Creek Grass. And the kicker is the cast of thousands in the audience who are pickin' and grinnin'.

The food at Rail Fence will be outstanding: Zak's from Zanesville will feature Mexican-American foods, Des Dutch Essenhaus from Shreve will serve chicken and trimmings - Amish style, The Scotch & Sirloin from Marion will have BBQ brats, beef, etc. There will be plenty of Budweiser and Coke on hand. Steve Ryan, banjo maker from Columbus will be on site with strings and other crafts.

So plan your mini-vacation with the BEST IN BLUEGRASS, modestly priced to give the festival-goer the best buy in many years.

Budweiser 9th ANNUAL
KING OF BEERS
I **INDEPENDENCE** **E**
WEEKEND
BLUEGRASS
FESTIVAL

JULY 1-3

**Rail Fence Park,
Mt. Gilead, Ohio**

(ON RT. 42, 7 MILES NORTH OF TOWN)

TICKETS

Friday: \$4.00 Saturday: \$6.00 Sunday \$8.00
Weekend: \$15.00 (Gate)

INFORMATION: (419) 362-3913

Great Food on Premises Saturday & Sunday
Scotch & Sirloin, -BBQ Brats & Ribs / Marion, Ohio
Des Dutch Essenhaus, -BBQ Chicken & Fixin's / Shreve, Ohio
Zak's, -Mexican & American Food / Zanesville, Ohio

Showers, Electric Hookups (Extra).
1st come, 1st serve, Dumping Station,
Large Building in Case of Rain

Only vendors with prior approval permitted at Festival. Positively: No drugs allowed. All pets on leash at all times & out of concert area. Not liable for accidents or lost articles. No bottles or cans. Motorcycles must be parked where designated for duration of stay. All Tapes and Radios will be confined to camping area and turned off at midnight. No loudspeakers in camping area.

CALENDAR — June

May

- 27 FRI CROSSTOWN TRAFFIC. PADDLEWHEEL (FORMERLY COTTAGE INN)
- 28 SAT LAND OF LEGEND FESTIVAL BALL. FILET MIGNON, WINE, GENE BRANSTOOL. \$35/COUPLE
BLUEGRASS FESTIVAL. RAIL FENCE PARK, MT. GILEAD
OLD FASHIONED ICE CREAM FESTIVAL. YE OLDE MILL, UTICA
CROSSTOWN TRAFFIC. PADDLEWHEEL
- 29 SUN BLUEGRASS FESTIVAL. RAIL FENCE PARK, MT. GILEAD
OLD FASHIONED ICE CREAM FESTIVAL. YE OLDE MILL, UTICA
ZIPPER. SHERATON INN
GENO. DOWN UNDER
DJ. SUNDOWNER
LARRY, DJ. LOONEY LARRY'S
- 30 MON MEMORIAL DAY
OLD FASHIONED ICE CREAM FESTIVAL. YE OLDE MILL, UTICA
ZIPPER. SHERATON INN
GENO. DOWN UNDER
NEWARK CAMPUS (OSU) CHESS CLUB. 366-3321
- 31 TUE DENISON CHESS CLUB. 587-6682
LARRY, DJ. LOONEY LARRY'S

June

- 1 WED BASEBALL, LEVIN PARK. RUBLE BROS. BAND VS BUDWEISER,
6 PM □ TECH CENTER VS EYELAND, 7 PM □ DON'S FURNITURE
VS LEGEND VALLEY SECURITY, 9 PM □ ARWEBB VS HEADS UP,
6 PM □ CENTRAL TRUST VS SUBWAY, 7 PM □ MATESICH VS
GLANCY OIL, 8 PM
DIPPER THE MAGICIAN. LAND OF LEGEND FESTIVAL, 6:45 PM
KENNY YAHN'S COUNTRY KNIGHTS. LAND OF LEGEND FESTIVAL,
7:30 PM
CARNIVAL, LAND OF LEGEND FESTIVAL. HARTS/BIG BEAR
PARADE, LAND OF LEGEND FESTIVAL. STARTS AT ROOSEVELT
JUNIOR HIGH SCHOOL, 5 PM
RIF RAF (ZANESVILLE). BULL'S EYE
RUBLE BROS. BAND CORRAL COUNTRY SALOON
ELSIE AT PIANO. YESTERDAY'S PUB
ZIPPER. SHERATON INN
GENO. DOWN UNDER
LARRY, DJ. LOONEY LARRY'S
- 1 WED PARENTS WITHOUT PARTNERS ORIENTATION. OSU/COTC,
HOPEWELL HALL, 7 PM. 522-4136
FAST PITCH SOFTBALL, LEVIN PARK, 8 AND 9 PM
- 2 TH MARK WADE, VENTRILOQUIST. LAND OF LEGEND FESTIVAL,
5:30 PM
DAVID LEHMAN, MAGICIAN. LAND OF LEGEND FESTIVAL, 6:15 PM
SINGLE AGAIN SUPPORT GROUP. ST. FRANCIS SCHOOL CAFETERIA
7:30 PM. "ONE IS A WHOLE NUMBER"
CARNIVAL, LAND OF LEGEND FESTIVAL. HARTS/BIG BEAR
RIF RAF (ZANESVILLE). BULL'S EYE
RUBLE BROS. BAND. CORRAL COUNTRY SALOON
BILL WILLIAMS AT PIANO. PENNSYLVANIA STATION
DJ. SUNDOWNER
SATIN & STEEL. SOMEWHERE ELSE
ZIPPER. SHERATON INN
GENO. DOWN UNDER
BASEBALL, LEVIN PARK. GLANCY OIL VS SHERMAN'S IRON &
METAL, 7 PM □ CHARLIE'S GARAGE VS GOUMAS, 7 PM □
COCA-COLA VS PEPSI, 8 PM □ BLACK STAR VS HEADS UP,
6 PM □ COPPER PENNY VS STYPULA BROS., 8 PM □ RACCOON
VALLEY VS PORKY'S TOWING, 6 PM
- 3 FRI JAZZERCISE. LAND OF LEGEND FESTIVAL, 5 PM
MIDNIGHT FLIGHT. LAND OF LEGEND FESTIVAL, 6 PM
JOHN REHEL DANCERS. LAND OF LEGEND FESTIVAL, 9:30 PM
THE MAIN EVENT. OUTSIDE AT SHERATON INN WITH WCLT,
(T-100). EVERYTHING \$1.00, 5-8 PM. MUSIC BY SPECIAL
EDITION, 6-8 PM
BASEBALL, LEVIN PARK. ATHENA NURSING HOME VS NAZARENE
CHURCH, 6 PM □ SUBWAY VS INDEPENDENTS, 7 PM □ YOST
VS WALKER MFG., 8 PM
NEWARK MODEL RAILROAD CLUB, MEETING. 55½ W. CHURCH,
7:30 PM. JOE, 344-5038
RIF RAF (ZANESVILLE). BULL'S EYE
RUBLE BROS. BAND. CORRAL COUNTRY SALOON
BILL WILLIAMS AT PIANO. PENNSYLVANIA STATION
SATIN & STEEL. SOMEWHERE ELSE
ZIPPER. SHERATON INN
SIDELINE. PADDLEWHEEL
SIDEWINDERS. DRUIDS
GENO. DOWN UNDER
NASHVILLE COUNTRY. SUNDOWNER
DENVER BOUND. KRANER'S CORNER
STAN STAGGER'S BAND. STAN'S PLACE
SPEC 4 AND JIM HALL. NEWARK EAGLES
CARNIVAL, LAND OF LEGEND FESTIVAL. HARTS/BIG BEAR

3 FRI SLEEP OVER (FOR CHILDREN). OLYMPIC ACADEMY OF GYMNASTICS AND DANCE, 8 PM-9 AM
DJ. SUNDOWNER

4 SAT THE MAENNERCHOR (GERMAN SINGERS). LAND OF LEGEND FESTIVAL, 1 PM
SILVER WINGS. LAND OF LEGEND FESTIVAL, 2:30 PM
FORMULA. LAND OF LEGEND FESTIVAL, 4:30 PM
FLAKEY THE MAGIC CLOWN. LAND OF LEGEND FESTIVAL, 9 PM
LIBBY'S MID NIGHT LIGHT. LAND OF LEGEND FESTIVAL, 10PM
JUNIOR CHAMPIONSHIP BOWLING TOURNAMENT (TELEVISED),
VALLEY LANES. 366-3520
5TH ANNUAL OWENS-CORNING FIBERGLAS FIVE MILE RACE.
STARTS AT CLUBHOUSE, 840 HOLLANDER ST., 9 AM
DJ. SUNDOWNER
NEWARK RODDERS MEETING. AT FRANK & STEIN, 8 PM. PUBLIC
OPEN BASS TOURNAMENT. F.O.C.U.S. BASS CLUB, CRANBERRY
POINT RESTAURANT, BUCKEYE LAKE, 7 AM-6 PM
HANOVER DAY. FLOWERS HALL. ROUND AND SQUARE DANCE, 8
PM AND SUPPER AT 4 PM
BONSAI SHOW. DAWES ARBORETUM, 12 NOON
NATURE DISCOVERY WALK. DAWES ARBORETUM, 1 & 3 PM
PHIL DIRT AND THE DOZERS. BULL'S EYE
RUBLE BROS. BAND. CORRAL COUNTRY SALOON
BILL WILLIAMS AT PIANO. PENNSYLVANIA STATION
SATIN & STEEL. SOMEWHERE ELSE
ZIPPER. SHERATON INN
SIDELING. PADDLEWHEEL
SIDEWINDERS. DRUIDS
GENO. DOWN UNDER
NASHVILLE COUNTRY. SUNDOWNER
DENVER BOUND. KRANER'S CORNER
STAN STAGGER'S BAND. STAN'S PLACE
SPEC 4 AND JIM HALL. NEWARK EAGLES
CARNIVAL, LAND OF LEGEND FESTIVAL. HARTS/BIG BEAR
OWENS-CORNING FIBERGLAS SUMMER PICNIC, WITH THE LATE
SHOW (LIVE COUNTRY MUSIC). FIBERGLAS FIELD, HOLLAN-
DER ST.
DANCE RECITAL. OLYMPIC ACADEMY OF GYMNASTICS AND DANCE.
HELD AT NEWARK HIGH SCHOOL, 7:30 PM

5 SUN FUN RUN, YWCA
BONSAI SHOW. DAWES ARBORETUM, 11 AM
BILL WILLIAMS AT PIANO. PENNSYLVANIA STATION
CARNIVAL, LAND OF LEGEND FESTIVAL. HARTS/BIG BEAR
NEWARK YMCA TRIATHLON (SWIMMING, BICYCLING, RUNNING).
8 AM. 345-6681

5 SUN DJ. SUNDOWNER
LARRY, DJ. LOONEY LARRY'S
55 PLUS BAND. SENIOR CITIZENS. LAND OF LEGEND FESTIVAL,
1 PM
GOLDEN AGE CHORUS, LAND OF LEGEND FESTIVAL, 3 PM
CHEROKEE LACE. LAND OF LEGEND FESTIVAL, 5 PM
EL AMSI DANCERS. LAND OF LEGEND FESTIVAL, 8:30 PM
CHEROKEE LACE. LAND OF LEGEND FESTIVAL, 9 PM

6 MON POOL TOURNAMENT. PADDLEWHEEL, BUCKEYE LAKE
FUN RUN, YWCA
BASEBALL, LEVIN PARK. DOW CHEMICAL VS KLEEN-SWEEP, 6 PM
□ STATE FARM II VS OWENS-CORNING FIBERGLAS, 7 PM □
STATE FARM VS NAFS, 8 PM
POWDER PUFF BASEBALL, LEVIN PARK. KAISER VS LITTLE
SHAG-DEVITO AUTO, 6 PM □ FIBERGLAS COLONIAL VS OSCAR'S
7 PM □ ADS VS STUDIO I, 8 PM
TOM GLADSTONE. YESTERDAY'S PUB
GENO. DOWN UNDER
NEWARK CAMPUS (OSU) CHESS CLUB. 366-3321
KANIENGHAGA DANCERS. LAND OF LEGEND FESTIVAL, 5 PM
MARK WADE, VENTRILOQUIST. LAND OF LEGEND FESTIVAL, 6 PM
DIPPER THE MAGICIAN. LAND OF LEGEND FESTIVAL, 8 PM
LICKING COUNTY BARBER SHOP QUARTET. LAND OF LEGEND
FESTIVAL, 9:30 PM

7 TUE BASEBALL, LEVIN PARK. BASKIN-ROBBINS VS DOW CHEMICAL,
6 PM □ MOOSE LODGE VS CALIFORNIA CONCEPT II, 7 PM □
PLAZA STYLING VS KAISER, 8 PM □ M & B DRILLING VS
SUBWAY, 8 PM
POWDER PUFF BASEBALL, LEVIN PARK. KNIGHTS OF PYTHIA
VS WENDELL'S, 6 PM □ CHATHAM COUNTY VS FIBERGLAS ALL
STARS, 7 PM
HERBS & EDIBLES. DAWES ARBORETUM, 7 PM. RESERVATIONS
ELSIE AT PIANO. YESTERDAY'S PUB
ZIPPER. SHERATON INN
GENO. DOWN UNDER
LARRY, DJ. LOONEY LARRY'S
DENISON CHESS CLUB. 587-6682
CHEROKEE LACE. LAND OF LEGEND FESTIVAL, 5 PM
LIBBY'S MID NIGHT FLIGHT. LAND OF LEGEND FESTIVAL,
8 PM

- 8 WED BASEBALL, LEVIN PARK. RUBLE BROS. BAND VS TECH CENTER, 6 PM □ DON'S FURNITURE VS BUDWEISER, 7 PM □ NEWARK SUZUKI VS LEGEND VALLEY SECURITY, 9 PM □ R & J DRILLING VS GLANCY OIL, 6 PM □ MATESICH VS SUBWAY, 7 PM □ CENTRAL TRUST VS ARWEBB, 8 PM
DANCE RECITAL, "ATLANTIC CITY U.S.A." JOAN GARRETT DANCE ARTS STUDIO. HELD AT NEWARK HIGH SCHOOL, 7 PM \$3
WHISKEY RIVER. BEECHRIDGE LOUNGE
PLAYBACK (ZANESVILLE). BULL'S EYE
LARRY, DJ. LOONEY LARRY'S
ELSIE AT PIANO. YESTERDAY'S PUB
ZIPPER. SHERATON INN
GENO. DOWN UNDER
EQUUS. GRANVILLE PLAYERS, BURKE RECITAL HALL, DENISON
FAST PITCH SOFTBALL, LEVIN PARK, 8 AND 9 PM
- 8 WED FLAKEY THE MAGIC CLOWN. LAND OF LEGEND FESTIVAL, 5 PM
CHEROKEE LACE. LAND OF LEGEND FESTIVAL, 6 PM
KENNY YAHN'S COUNTRY KNIGHTS. LAND OF LEGEND FESTIVAL, 8 PM
- 9 TH BARBERSHOP QUARTET. LAND OF LEGEND FESTIVAL, 5 PM
DANIENGHAGA DANCERS. LAND OF LEGEND FESTIVAL, 6 PM
FORMULA. LAND OF LEGEND FESTIVAL, 7:30 PM
- 9 TH BASEBALL, LEVIN PARK. PEPSI VS GLANCY OIL, 7 PM □
SHERMAN'S IRON & METAL VS NEMESIS, 8 PM □ STYPULA BROS. VS BLACK STAR, 6 PM □ GOUMAS VS RACCOON VALLEY, 7 PM □ CHARLIE'S GARAGE VS HEADS UP, 8 PM □ PORKY'S TOWING VS COPPER PENNY, 6 PM
SHALOM (MEETING). CHRISTIAN SINGLES, DIVORCED OR WIDOWED. HOPEWELL HALL, OSU/COTC, 7:30 PM. BETTY, 587-1436
WHISKEY RIVER. BEECHRIDGE LOUNGE
PLAYBACK (ZANESVILLE). BULL'S EYE
BRANDY. CORRAL COUNTRY SALOON
BILL WILLIAMS AT PIANO. PENNSYLVANIA STATION
ZIPPER. SHERATON INN
GENO. DOWN UNDER
EQUUS. GRANVILLE PLAYERS, BURKE RECITAL HALL, DENISON
DJ. SUNDOWNER
HORSESHOE PITCHING CONTEST. HARTFORD FAIRGROUNDS
- 10 FRI KOOL COUNTRY. SQUARE DANCING ONLY. LAND OF LEGEND FESTIVAL, 8 PM
MEMPHIS EXPRESS. LAND OF LEGEND FESTIVAL, 5 PM
- 10 FRI SPRING NATIONALS. NATIONAL TRAILS RACEWAY, HEBRON
BASEBALL, LEVIN PARK. GIDDIUP GO VS INDEPENDENTS, 6 PM
□ ATHENA NURSING HOME VS YOST CO., 7 PM □ WALKER MFG. VS SUBWAY, 8 PM
NEWARK MODEL RAILROAD CLUB, MEETING 55½ W. CHURCH, 7:30 PM. JOE, 344-5038
NIGHT HIKE. DAWES ARBORETUM, 8:45 PM
WHISKEY RIVER. BEECHRIDGE LOUNGE
PLAYBACK (ZANESVILLE). BULL'S EYE
BRANDY. CORRAL COUNTRY SALOON
BILL WILLIAMS AT PIANO. PENNSYLVANIA STATION
ZIPPER. SHERATON INN
SIDELINE. PADDLEWHEEL
VARIATIONS. DRUIDS
GENO. DOWN UNDER
MEMPHIS EXPRESS. SUNDOWNER
FOREPLAY. KRANER'S CORNER
STAN STAGGER'S BAND. STAN'S PLACE
EQUUS. GRANVILLE PLAYERS, BURKE RECITAL HALL, DENISON
DJ. SUNDOWNER
- 11 SAT SPRING NATIONALS. NATIONAL TRAILS RACEWAY, HEBRON
DANCE RECITAL, "PROSE AND POETRY." JOAN GARRETT DANCE ARTS STUDIO. HELD AT NEWARK HIGH SCHOOL, 7 PM. \$3
AWARENESS DEVELOPMENT CLASS. DAWES ARBORETUM, 10 AM
WHISKEY RIVER. BEECHRIDGE LOUNGE
PLAYBACK (ZANESVILLE). BULL'S EYE
DJ. SUNDOWNER
BRANDY. CORRAL COUNTRY SALOON
BILL WILLIAMS AT PIANO. PENNSYLVANIA STATION
- 11 SAT ZIPPER. SHERATON INN
SIDELINE. PADDLEWHEEL
GENO. DOWN UNDER
MEMPHIS EXPRESS. SUNDOWNER
FOREPLAY. KRANER'S CORNER
LES FULTON. AMERICAN LEGION POST #85
STAN STAGGER'S BAND. STAN'S PLACE
FLEA MARKET, LAND OF LEGEND FESTIVAL. AT OLD ROPER PLANT, WEHRLE AVE.
EQUUS. GRANVILLE PLAYERS, BURKE RECITAL HALL, DENISON
- 11 SAT ARCHERY DEMONSTRATION. LAND OF LEGEND FESTIVAL, 1 PM
BOB HALL AND THE HAPPY VALLEY POOR BOYS. LAND OF LEGEND FESTIVAL, 4:30 PM
WEATHER VANE PLAYHOUSE. LAND OF LEGEND FESTIVAL, 6:30 PM
THE MAENNERCHOR. LAND OF LEGEND FESTIVAL, 8 PM
FORSS. LAND OF LEGEND FESTIVAL
- 12 SUN SPRING NATIONALS. NATIONAL TRAILS RACEWAY, HEBRON
KNOW YOUR LANDSCAPE TREES & SHRUBS. DAWES ARBORETUM, 1:30 PM. RESERVATIONS
BILL WILLIAMS AT PIANO. PENNSYLVANIA STATION
FLEA MARKET. LAND OF LEGEND FESTIVAL. AT OLD ROPER PLANT, WEHRLE AVE.
EQUUS. GRANVILLE PLAYERS, BURKE RECITAL HALL, DENISON
DJ. SUNDOWNER
LARRY, DJ. LOONEY LARRY'S
- 12 SUN SIDE LINES. LAND OF LEGEND FESTIVAL, 1 PM
RUBLE BROS. BAND. LAND OF LEGEND FESTIVAL, 6:30 PM
- 13 MON POWDER PUFF BASEBALL, LEVIN PARK. FIBERGLAS COLONIAL VS WENDELL'S, 6 PM □ LITTLE SHAG-DEVITO AUTO V: FIBERGLAS ALL STARS, 7 PM □ CHATHAM COUNTY VS KAISER 8 PM
BASEBALL, LEVIN PARK. STATE FARM VS STATE FARM II, 6 PM □ KLEEN-SWEEP VS OWENS-CORNING FIBERGLAS, 7 PM □ NAFS VS DOW CHEMICAL, 8 PM
TOM GLADSTONE. YESTERDAY'S PUB
GENO. DOWN UNDER
NEWARK CAMPUS (OSU) CHESS CLUB. 366-3321
- 14 TUE POWDER PUFF BASEBALL, LEVIN PARK. OSCAR'S VS ADS, 6 PM □ STUDIO I VS KNIGHTS OF PYTHIA, 7 PM
BASEBALL, LEVIN PARK. SUBWAY VS DOW CHEMICAL, 6 PM □ PLAZA STYLING VS MOOSE LODGE, 7 PM □ BASKIN-ROBBINS VS CALIFORNIA CONCEPT II, 8 PM □ M & B DRILLING VS KAISER, 8 PM
HERBS & EDIBLES. DAWES ARBORETUM, 7 PM. RESERVATIONS
ELSIE AT PIANO. YESTERDAY'S PUB
ZIPPER. SHERATON INN
GENO. DOWN UNDER
LARRY, DJ. LOONEY LARRY'S
DENISON CHESS CLUB. 587-6682
- 14 TUE STONE CREEK. LAND OF LEGEND FESTIVAL, 5 PM
FLAKEY THE MAGIC CLOWN. LAND OF LEGEND FESTIVAL, 8 PM
UNCLE JEFF FROM WNKO AND WENDELL P'S. OLDIES BUT GOODIES, 8:30 PM
- 15 WED BASEBALL, LEVIN PARK. BUDWEISER VS LEGEND VALLEY SECURITY, 6 PM □ DON'S FURNITURE VS NEWARK SUZUKI, 7 PM □ EYELAND VS RUBLE BROS. BAND, 9 PM □ HEADS UP VS CENTRAL TRUST, 6 PM □ MATESICH VS R & J DRILLING, 7 PM □ SUBWAY VS GLANCY OIL, 8 PM
WHISKEY RIVER. BEECHRIDGE LOUNGE
MASQUE. BULL'S EYE
LARRY, DJ. LOONEY LARRY'S
FAST PITCH SOFTBALL, LEVIN PARK, 8 AND 9 PM
ELSIE AT PIANO. YESTERDAY'S PUB
ZIPPER. SHERATON INN
GENO. DOWN UNDER
PARENTS WITHOUT PARTNERS ORIENTATION. OSU/COTC, HOPEWELL HALL, 7 PM. 522-4136
- 15 WED FORSS. LAND OF LEGEND FESTIVAL, 9 PM
- 16 TH SINGLE AGAIN SUPPORT GROUP. ST. FRANCIS SCHOOL CAFETERIA 7:30 PM "TRUST YOURSELF AND GROW."
BASEBALL, LEVIN PARK. GLANCY OIL VS COCA-COLA, 7 PM □ NEMESIS VS PEPSI, 8 PM □ RACCOON VALLEY VS COPPER PENNY, 6 PM □ STYPULA BROS. VS CHARLIE'S GARAGE, 7 PM □ PORKY'S TOWING VS HEADS UP, 8 PM □ GOUMAS VS BLACK STAR, 6 PM
GUYS AND DOLLS. WEATHERVANE PLAYHOUSE. 366-4616
WHISKEY RIVER. BEECHRIDGE LOUNGE
MASQUE. BULL'S EYE
BRANDY. CORRAL COUNTRY SALOON
BILL WILLIAMS AT PIANO. PENNSYLVANIA STATION
ZIPPER. SHERATON INN
GENO. DOWN UNDER
HEISEY GLASS DISPLAY, ANTIQUE SHOW. OSU/COTC CAFETERIA AND GYM
DJ. SUNDOWNER
- 16 TH BOOGIE BAND (JAZZ). LAND OF LEGEND FESTIVAL, 5 PM
- 17 FRI HEISEY GLASS DISPLAY, ANTIQUE SHOW. OSU/COTC CAFETERIA AND GYM
BASEBALL, LEVIN PARK. NAZARENE CHURCH VS YOST CO., 6 PM □ INDEPENDENTS VS WALKER MFG., 7 PM □ GIDDIUP UP VS SUBWAY, 8 PM
NEWARK MODEL RAILROAD CLUB, MEETING. 55½ W. CHURCH, 7:30 PM. JOE, 344-5038
GUYS AND DOLLS. WEATHERVANE PLAYHOUSE. 366-4616
WHISKEY RIVER. BEECHRIDGE LOUNGE
MASQUE. BULL'S EYE
BRANDY. CORRAL COUNTRY SALOON
BILL WILLIAMS AT PIANO. PENNSYLVANIA STATION
ZIPPER. SHERATON INN
SLO-POKE II. PADDLEWHEEL
- 17 FRI SCARLET. LAND OF LEGEND FESTIVAL, 5 PM

17 FRI VARIATIONS. DRUIDS
GENO. DOWN UNDER
MEMPHIS EXPRESS. SUNDOWNER
COUNTRY LEGEND. KRANER'S CORNER
STAN STAGGER'S BAND. STAN'S PLACE
LANCERS, NEWARK EAGLES
DJ. SUNDOWNER

18 SAT SILVER CANYON BAND. LAND OF LEGEND FESTIVAL, 1 PM
SPECIAL EDITION. LAND OF LEGEND FESTIVAL, 3:30 PM
JIM HARRIS (WCLT) VARIETY SHOW. LAND OF LEGEND FESTIVAL
6-10 PM
SCARLET. LAND OF LEGEND FESTIVAL, 10:30 PM

18 SAT HEISEY GLASS DISPLAY, ANTIQUE SHOW. OSU/COTC CAFETERIA
AND GYM
50 BLOCK YARD SALE. IN OLD TOWN WEST, IN CONJUNCTION
WITH LAND OF LEGEND FESTIVAL
OPEN HORSESHOE CONTEST. HEBRON HORSESHOE CLUB, HEBRON
GUYS AND DOLLS. WEATHERVANE PLAYHOUSE. 366-4616
EARLY MORNING BIRD WATCHING. DAWES ARBORETUM, 8 AM
FOLKLIFE DAY. DAWES ARBORETUM, 9 AM
NATURE DISCOVERY WALK. DAWES ARBORETUM, 1 AND 3 PM
WHISKEY RIVER. BEECHRIDGE LOUNGE
MASQUE. BULL'S EYE
BRANDY. CORRAL COUNTRY SALOON
BILL WILLIAMS AT PIANO. PENNSYLVANIA STATION
ZIPPER. SHERATON INN
HEATH FIRE DEPT. CHICKEN BBQ. 12 NOON
SLO-POKE II. PADDLEWHEEL
VARIATION. DRUIDS
GENO. DOWN UNDER
MEMPHIS EXPRESS. SUNDOWNER
COUNTRY LEGEND. KRANER'S CORNER
LES FULTON. AMERICAN LEGION POST #85
STAN STAGGER'S BAND. STAN'S PLACE
TRESPASS. NEWARK EAGLES
FLEA MARKET, LAND OF LEGEND FESTIVAL. AT OLD ROPER
PLANT, WEHRLE AVE.
LAND OF LEGEND CENTURY RIDE. LICKING WHEELMEN BICYCLE
CLUB
POLICEMAN'S BALL. AT THE ELKS, 9-1, \$10
DJ. SUNDOWNER

19 SUN FATHER'S DAY
HEISEY GLASS DISPLAY, ANTIQUE SHOW. OSU/COTC CAFETERIA
AND GYM
50 BLOCK YARD SALE. OLD TOWN WEST, IN CONJUNCTION WITH
LAND OF LEGEND FESTIVAL
LET'S LOOK AT PLANTS - GROUNDCOVERS. DAWES ARBORETUM,
1:30 PM
BILL WILLIAMS AT PIANO. PENNSYLVANIA STATION

19 SUN MEMPHIS EXPRESS. LAND OF LEGEND FESTIVAL, 1 PM
MASQUE. LAND OF LEGEND FESTIVAL, 4:30 PM

19 SUN FLEA MARKET, LAND OF LEGEND FESTIVAL. OLD ROPER PLANT,
WEHRLE AVE.
DJ. SUNDOWNER
LARRY, DJ. LOONEY LARRY'S
OPEN HORSESHOE CONTEST, HORSESHOE CLUB, HEBRON

20 MON TOM GLADSTONE. YESTERDAY'S PUB
GENO. DOWN UNDER
NEWARK CAMPUS (OSU) CHESS CLUB. 366-3321

21 TUE BASEBALL, LEVIN PARK. M & B DRILLING VS PLAZA STYLING,
6 PM □ SUBWAY VS KAISER, 7 PM □ DOW CHEMICAL VS
CALIFORNIA CONCEPT II, 8 PM □ BASKIN-ROBBINS VS MOOSE
LODGE, 8 PM
OHIO COUNTRY WESTERN MUSIC ASSOC., NEWARK CHAPTER,
MEETING AND ENTERTAINMENT. FREE TO PUBLIC. FLOWERS
HALL, HANOVER
ELSIE AT PIANO. YESTERDAY'S PUB
ZIPPER. SHERATON INN
GENO. DOWN UNDER
LARRY, DJ. LOONEY LARRY'S
DENISON CHESS CLUB. 587-6682

21 TUE DOWNTOWNERS PICNIC. LAND OF LEGEND FESTIVAL, ON THE
SQUARE, 1-4 PM

22 WED BASEBALL, LEVIN PARK. NEWARK SUZUKI VS RUBLE BROS. BAND
6 PM □ LEGEND VALLEY SECURITY VS TECH CENTER, 7 PM □
EYELAND VS DON'S FURNITURE, 9 PM □ HEADS UP VS
MATESICH, 6 PM □ GLANCY OIL VS ARWEBB, 7 PM □ R & J
DRILLING VS CENTRAL TRUST, 8 PM
RIGHT TO LIFE MEETING. STATE SAVINGS, N. 21ST, 7 PM
ELSIE AT PIANO. YESTERDAY'S PUB
ZIPPER. SHERATON INN
GENO. DOWN UNDER
HELLO DOLLY. GRANVILLE PLAYERS, BURKE RECITAL HALL,
DENISON
LARRY, DJ. LOONEY LARRY'S
FAST PITCH SOFTBALL, LEVIN PARK, 8 AND 9 PM

23 TH BASEBALL, LEVIN PARK. PEPSI VS SHERMAN'S IRON & METAL,
7 PM □ COCA-COLA VS NEMESIS, 8 PM □ PORKY'S TOWING
VS CHARLIE'S GARAGE, 6 PM □ COPPER PENNY VS HEADS UP,
7 PM □ RACCOON VALLEY VS BLACK STAR, 8 PM □ GOUMAS
VS STYPULA BROS., 6 PM
GUYS AND DOLLS. WEATHERVANE PLAYHOUSE. 366-4616
BILL WILLIAMS AT PIANO. PENNSYLVANIA STATION
ZIPPER. SHERATON INN
GENO. DOWN UNDER

23 TH HELLO DOLLY. GRANVILLE PLAYERS, BURKE RECITAL HALL,
DENISON
DJ. SUNDOWNER

24 FRI 5TH GREAT LAKES HERB SYMPOSIUM. DENISON UNIV. CONTACT
CHARLES DAWES, DAWES ARBORETUM
BASEBALL, LEVIN PARK. SUBWAY VS NAZARENE CHURCH, 6 PM
□ YOST CO. VS GIDDIUP GO, 7 PM □ INDEPENDENTS VS
ATHENA NURSING HOME, 8 PM
NEWARK MODEL RAILROAD CLUB, MEETING. 55½ W. CHURCH,
7:30 PM. JOE, 344-5038
GUYS AND DOLLS. WEATHERVANE PLAYHOUSE. 366-4616
NIGHT HIKE. DAWES ARBORETUM, 8:45 PM
MONEY. BULL'S EYE
BILL WILLIAMS AT PIANO. PENNSYLVANIA STATION
ZIPPER. SHERATON INN
KOOL COUNTRY. DRUIDS
GENO. DOWN UNDER
NATURAL HARMONY. SUNDOWNER
THE LATE SHOW. KRANER'S CORNER
STAN STAGGER'S BAND. STAN'S PLACE
TOMMY OVERSTREET AND THE NASHVILLE EXPRESS (FROM
NASHVILLE). NEWARK EAGLES
HELLO DOLLY. GRANVILLE PLAYERS, BURKE RECITAL HALL,
DENISON
DJ. SUNDOWNER

25 SAT 5TH GREAT LAKES HERB SYMPOSIUM. DENISON UNIV. CONTACT
CHARLES DAWES, DAWES ARBORETUM.
MID OHIO BLUEGRASS FESTIVAL. FRONTIER RANCH, PATASKALA
GUYS AND DOLLS. WEATHERVANE PLAYHOUSE. 366-4616
MONEY. BULL'S EYE
BILL WILLIAMS AT PIANO. PENNSYLVANIA STATION
ZIPPER. SHERATON INN
KOOL COUNTRY. DRUIDS
GENO. DOWN UNDER
NATURAL HARMONY. SUNDOWNER
THE LATE SHOW. KRANER'S CORNER
STAN STAGGER'S BAND. STAN'S PLACE
MEMPHIS EXPRESS. NEWARK EAGLES
PERRYTON STREET OF YESTERYEAR, PARADE
HELLO DOLLY. GRANVILLE PLAYERS, BURKE RECITAL HALL,
DENISON
DJ. SUNDOWNER

26 SUN 5TH GREAT LAKES HERB SYMPOSIUM. DENISON UNIV. CONTACT
CHARLES DAWES, DAWES ARBORETUM
MID OHIO BLUEGRASS FESTIVAL. FRONTIER RANCH, PATASKALA
BILL WILLIAMS AT PIANO. PENNSYLVANIA STATION
HELLO DOLLY. GRANVILLE PLAYERS, BURKE RECITAL HALL,
DENISON
DJ. SUNDOWNER
LARRY, DJ. LOONEY LARRY'S

27 MON JOURNEY. LEGEND VALLEY
GREASE. AUDITORIUM THEATRE
BASEBALL, LEVIN PARK. OWENS-CORNING FIBERGLAS VS NAFS,
6 PM □ DOW CHEMICAL VS STATE FARM, 7 PM □ STATE FARM
II VS KLEEN-SWEEP, 8 PM
POWDER PUFF BASEBALL, LEVIN PARK. ADS VS CHATHAM COUNTY
6 PM □ LITTLE SHAG-DEVITO AUTO VS FIBERGLAS COLONIAL
7 PM □ OSCAR'S VS KNIGHTS OF PYTHIA, 8 PM
TOM GLADSTONE. YESTERDAY'S PUB
GENO. DOWN UNDER
I LOVE NEWARK WEEK, JUNE 27-JULY 4
NEWARK CAMPUS (OSU) CHESS CLUB. 366-3321

28 TUE GREASE. AUDITORIUM THEATRE
POWDER PUFF BASEBALL, LEVIN PARK. WENDELL'S VS STUDIO I,
6 PM □ FIBERGLAS ALL STARS VS KAISER, 7 PM
ELSIE AT PIANO. YESTERDAY'S PUB
ZIPPER. SHERATON INN
GENO. DOWN UNDER
LARRY, DJ. LOONEY LARRY'S
DENISON CHESS CLUB. 587-6682

29 WED DREAMER. BULL'S EYE
RUBLE BROS. BAND. CORRAL COUNTRY SALOON
ZIPPER. SHERATON INN
GENO. DOWN UNDER
HELLO DOLLY. GRANVILLE PLAYERS, BURKE RECITAL HALL,
DENISON
LARRY, DJ. LOONEY LARRY'S
FAST PITCH SOFTBALL, LEVIN PARK, 8 AND 9 PM

30 TH SINGLE AGAIN SUPPORT GROUP. ST. FRANCIS SCHOOL CAFETERIA
7:30 PM. "THE ROSE"
PLAY IT AGAIN, SAM. WEATHERVANE PLAYHOUSE. 366-4616
HELLO DOLLY. GRANVILLE PLAYERS, BURKE RECITAL HALL,
DENISON

30 TH BASEBALL, LEVIN PARK. NEMESIS VS GLANCY OIL, 7 PM □
 SHERMAN'S IRON & METAL VS COCA-COLA, 8 PM
 FLOWER CONDITIONING & INTRODUCTION TO FLOWER ARRANGING.
 DAWES ARBORETUM, 7:30 PM. RESERVATIONS
 DREAMER. BULL'S EYE
 RUBLE BROS. BAND. CORRAL COUNTRY SALOON
 ZIPPER. SHERATON INN
 GENO. DOWN UNDER

July

1 FRI PLAY IT AGAIN, SAM. WEATHERVANE PLAYHOUSE. 366-4616
 DREAMER. BULL'S EYE
 RUBLE BROS. BAND. CORRAL COUNTRY SALOON
 ZIPPER. SHERATON INN
 BUDWEISER'S 9TH ANNUAL INDEPENDENCE WEEKEND BLUEGRASS
 FESTIVAL. RAIL FENCE PARK, MT. GILEAD
 HELLO DOLLY. GRANVILLE PLAYERS, BURKE RECITAL HALL,
 DENISON

2 SAT BUDWEISER'S 9TH ANNUAL INDEPENDENCE WEEKEND BLUEGRASS
 FESTIVAL. RAIL FENCE PARK, MT. GILEAD
 PLAY IT AGAIN, SAM. WEATHERVANE PLAYHOUSE. 366-4616
 DREAMER. BULL'S EYE
 RUBLE BROS. BAND. CORRAL COUNTRY SALOON
 ZIPPER. SHERATON INN
 HELLO DOLLY. GRANVILLE PLAYERS, BURKE RECITAL HALL-
 DENISON

3 SUN BUDWEISER'S 9TH ANNUAL INDEPENDENCE WEEKEND BLUEGRASS
 FESTIVAL. RAIL FENCE PARK, MT. GILEAD
 HELLO DOLLY. GRANVILLE PLAYERS, BURKE RECITAL HALL,
 DENISON

THE LAND OF LEGEND

Yes, the Land of Legend Festival is back; bigger and better than ever. Almost three solid weeks of entertainment are slated, highlighted by a parade, flea markets, Putt Putt Golf tournaments, carnival, many live bands and much more (see Calendar).

The Festival began in 1966 at Moundbuilders Park, being an annual event until last year. The original intent was to depict the rich history of Licking County. That intent survives today, but the festival has grown to an entertainment extravaganza with something for everyone. So come on out and see what Newark has to offer! And check out those Land of Legend Festival souvenir T-Shirts.

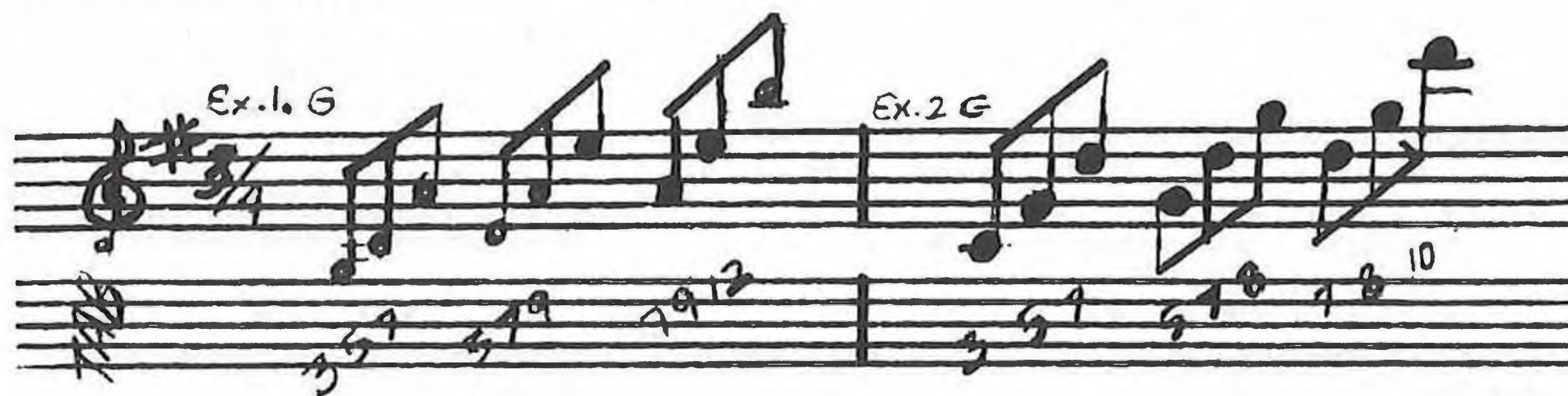
BAND MUSIC CENTER

9 N. 4TH ST.

345-8277

LICK BLIP by KRAIG PHILLIPS

SPICE UP YOUR SOLOS WITH RIFFS OF FIFTHS. CREATE LINES OF WIDE INTERVALS AND ADD COLOR TO YOUR PLAYING.



EX. 1 STARTS ON TONIC G AND ASCENDS IN GROUPS OF PERFECT FIFTHS.

EX. 2 VERY SIMILAR BUT STARTS ON THE FOURTH C AND IN THE 2ND AND 3RD BEATS THE INTERVAL OF A FOURTH IS USED.

BLUEGRASS COUNTRY-BLUEGRASS-COUNTRY-BLUEGRASS-COUNTRY-BLUEGRASS-

THE

PADDLEWHEEL

(formerly, Cottage Inn)

NEW MANAGEMENT

RT. 79 BUCKEYE LAKE

HOURS

MON - SAT 8:00 am to 2:30 am

SUN 10:00 am to 2:30 am

SUN Tom's Day (Draft Special)

MON Pool Tournament (8:30)

WED Ladies Night

COUNTRY IS BACK



LIVE ENTERTAINMENT
Starting
May 20th
"AUSTIN"



GRAND OPENING

4th OF JULY WEEKEND

COUNTRY-BLUEGRASS-COUNTRY-BLUEGRASS-COUNTRY-BLUEGRASS-COUNTRY

COUNTRY-BLUEGRASS-COUNTRY-BLUEGRASS-COUNTRY-BLUEGRASS-COUNTRY-BLUEGRASS-COUNTRY-BLUEGRASS-COUNTRY-BLUEGRASS

COUNTRY-BLUEGRASS-COUNTRY-BLUEGRASS-COUNTRY-BLUEGRASS-COUNTRY-BLUEGRASS-COUNTRY-BLUEGRASS-COUNTRY-BLUEGRASS

LINE

Soundboard makes every attempt to obtain the most accurate information before going to press. However, due to reasons beyond our control, there are often changes after printing.

AMERICAN LEGION POST #85, 58 E. Main St., Newark.

June 11 Les Fulton (country)
18 Mystique (variety)

BEECHRIDGE LOUNGE, 10880 Mill Dam Rd., Buckeye Lake.

June 8-11 Whiskey River (country, variety)
15-18 Whiskey River (country, variety)

BRYN MAWR, 3758 Lancaster Rd., Granville.

Weekly Michael on the baby grand piano.

BULL'S EYE, 565 Industrial Parkway, Heath.

June 1-3 Rif Raf. Zanesville. (rock)
4 Phil Dirt and the Dozers (50's rock)
8-11 Playback. Zanesville. (high energy Top 40)
15-18 Masque (rock)
24-25 Money (rock)
29-30 Dreamer (rock)

CORRAL COUNTRY SALOON, 6762 Hebron Rd., Hebron.

June 1-4 Ruble Brothers Band (Top 40, country/rock)
9-11 Brandy (Top 40, country/rock)
16-18 Brandy (Top 40, country?rock)
29-30 Ruble Brothers Band (Top 40, country/rock)

DOWN UNDER, 1225 W. Church St., Newark.

June 1-4 Geno
6-11 Geno
13-18 Geno
20-25 Geno
27-30 Geno

DRUIDS, 19 W. Harrison St., Newark.

June 3-4 Sidewinders (country)
10 Variations
17-18 Variations
24-25 Cool Country

U P

KRANER'S CORNER, Hebron, Rt. 40.
June 3-4 Denver Bound (country)
10-11 Foreplay
17-18 Country Legend (country)

NEWARK EAGLES, 52 Forry St., Newark.
June 3-4 Spec 4 and Jim Hall
10-11 Bits N Pieces
17 Lancers. Lancaster
18 Trespass
24 Tommy Overstreet and the Nashville
Express (from Nashville) \$5.
25 Memphis Express

PADDLEWHEEL (formerly Cottage Inn). Rt. 79, Buckeye Lake.
May 27-28 Crosstown Traffic (country)
June 3-4 Sideline (country)
10-11 Sideline (country)
17-18 Slo-Poke II (country)
24-25 General Store (bluegrass)

PENNSYLVANIA STATION, 25 E. Walnut St., Newark.
June 2-5 Bill Williams at piano (1930's & 40's)
9-12 same
16-19 same
23-26 same

SHERATON INN, 50 N. 2nd St., Newark.
May 29-30 Zipper (Top 40)
June 1-4 same
7-11 same
14-18 same
21-25 same
28-31 same

SOMEWHERE ELSE, 386 W. Main St., Newark.
June 2-4 Satin & Steel

STAN'S PLACE, 118 Union St., Newark.
Every Fri. and Sat.
Stan Stagger's Band (country)

SUNDOWNER, Rt. 79, Buckeye Lake.

June 3-4 Nashville Country (country)
10-11 Memphis Express (country)
17-18 Memphis Express (country)
24-25 Natural Harmony (country)

YESTERDAY'S PUB, 6th St., Newark.

Every Mon. Tom Gladstone (rhythm & blues)
Every Tue. &
Wed. Elsie at piano (sing along)



SUNDOWNER

STATE RT. 79, BUCKEYE LAKE

ALWAYS GOOD
COUNTRY MUSIC

11-2:30 WEEKDAYS & SAT.
1-2:30 SUNDAY

JAM SESSIONS ON SUNDAY



R&R ENTERTAINMENT CENTERS

730 W. CHURCH

409 S. 22ND

7 DAYS FROM 12 NOON
(CHURCH ST. - 24 HR. F, SAT)

MARTIN MUSIC

910 N. 21ST. 366-2344

SEE US FOR YOUR MUSICAL NEEDS
LOWEST PRICES IN AREA ON
STRINGS, STICKS, ACCESSORIES

HAVING A PARTY? NEED A BAND?
CALL WAYNE MARTIN'S
"SOLID STATE"

MAJOR CONCERTS

June

- 2 DON FRANCISCO. VETS Memorial, Columbus
- 3 SARAH VAUGHAN. Palace, Columbus
- 3-4 MCGUFFEY LANE. Screamin' Willies, Morse Rd., Columbus
- 4 MODERN ENGLISH. Agora, Columbus
- 4 THE BIG PARTY, featuring Horizon and Gerald Wayne.
Lausche Bldg., State Fair Grounds, Columbus
- 10-12 SPRING NATIONALS. National Trail Raceway
- 18 DARYL HALL & JOHN OATS. Songbird Center, Mansfield
- 27 JOURNEY. Legend Valley



The Beechridge
and the
Beechridge



FACES

AT THE
BEECHRIDGE



Brandy

DEFINITION: an alcoholic liquor distilled from wine or fruit juice.

This Brandy is distilled from many elements, and the sweet intoxicant that remains is well worth sipping when you get a chance. You might even become addicted.



The ingredients are somewhat of an enigma. For instance, Pete Wieliczko and Reid Coleman were high school enemies. Both have a strong Christian and prayer meeting background and have played extensively in redneck and biker bars. Now they're into heavy metal and country/rock. Reid's favorites are AC/DC and Merle Haggard. That's right! And Pete's are Ricki Scaggs and Pat Travers. Greg Libby, the drummer, has also studied classical piano. He admits being influenced by John Bonham (Led Zeplin drummer), Neil Peart (Rush), and Reid and Pete. Who? Greg is just finishing high school.



PETE

Mike Weed, on the other hand, will be a grandfather in November and also has a 3½ year old son. He is a licensed optician and gyrocopter pilot (must have an unusual perception). He is also an experienced local musician. He once formed a group called Mixed Company with Terry and Darrell Ruble and Vicki. He was also a member of Hung Jury, which travelled in the midwest and included Terry Ruble and Harry Felty (now in the Ruble Bros. Band). He enjoys all rock and roll.



REID



GREG



MIKE

What ties all these elements together and makes the Brandy sweet? Vicki Richard. All eyes usually focus on her as the band performs tunes like Don't Tell Me You Love Me, Hold On Loosely, Everybody Wants You, When A Man Loves A Woman, The Rose, and Johnny Be Good. She has a great deal of flash and appeal with her outfits, stage moves; and oh, those great big beautiful eyes! She is the keyboardist and one of the lead singers, along with Reid.

Brandy is a top 40 band, but they throw in a great deal of country, often some of Reid's originals. He has written about 150 tunes and is serious about writing.

One overall impression I get from spending some time with the group is their prevailing sense of playfulness and humor. They all have a high regard for each other, which came out during individual interviews and which helps insure greater success at working together and performing.

I asked Reid how he got so tall:
"Peanut butter and honey."

BRANDIED: to flavor, treat, or mix with brandy.

I've been brandied.



VICKI

ROCK TALK

HOW MANY ROCKS ARE THERE?

"Hey, man, do you want to rock and roll?" That's quite a loaded question, especially in very recent years, considering the many different rock and roll styles that have developed. Understanding who's doing what can be difficult. Some clarification may be in order. The three basic, most popular styles are Progressive Rock (or A.O.R.), Heavy Metal, and Power Pop. Progressive Rock is the most accessible of the three; it includes bands such as The Who, Fleetwood Mac, Billy Squier, Cheap Trick, et.al., and no one basic rock instrument is featured. Heavy Metal, on the other hand, relies on the loud, fuzzy guitar sound and encompasses acts such as U.F.O., Sammy Hagar, Judas Priest and Def Leppard. Power Pop is a marriage of sorts of the two afore-mentioned sounds in that it combines the rough edge of Heavy Metal with the accessibility of A.O.R. Journey, Rick Springfield, REO Speedwagon, and Bryan Adams are the more notable artists in this genre.

The phrase, "You can't tell the players without a scorecard" comes into play when trying to identify the new sounds developed due to the influence of Punk, New Wave, Reggae, etc. Technopop is a new style that has seen incredible success with the emergence of The Human League, A Flock of Seagulls, Duran Duran, Missing Persons, and other bands that rely on synthesized rhythms and melodies. Bands who were once considered strictly either Punk or New Wave have also found chart success by smoothing the edges, so to speak. The Police, Grace Jones, The Ramones, Nick Lowe, The Pretenders, etc., have found success by refining their respective sound to fit more easily onto radio playlists.

Other acts that have found recent success are so hard to categorize that they must be placed on the "Too Close to Call" list. Men at Work, INXS, the Cars, the Go-Go's, Madness and Culture Club surely fit this category.

Of course, because of the myriad of styles that have come and gone, this primer to modern music is only the tip of the iceberg and is restricted to the newest, most popular trends in rock and roll. Categorizing each and every style of music would surely take an entire issue of Soundboard. However, other styles will be discussed in subsequent issues and insight will be given on areas such as instrumental styles and origins of the more popular forms of modern music.

Michael S. Bethards

After the Bars Close

PHONING HOME IN NEWARK/HEATH

It seems like most towns have pay phone booths spaced every few blocks. Newark is different. It can be difficult enough to find one during the day, but try looking at 3:30 am when your car breaks down.

Here is a little guide that might help when you're in a jam. To the east, the only one I could find was at Dagwoods on E. Main St. Northbound, you'll find one in Kroger and an outside booth at the Colonial Center on Mt. Vernon Rd. (Rt. 13). Heading west, there are two outside booths on Church St. at Neal, and on weekends you can go into R & R Entertainment on Church St. which is open 24 hours. Further west is an outside booth at Frisch's on Granville Road. In the center of town there are outside phones on the east and west sides of the Square, and there is a row of three outside the telephone company on N. 4th St. There is also the Sheraton Inn, and if you're not too loaded, you'll find one down the stairs at the Police Dept.

There aren't any to the south until you get to Heath. You'll find one at Dunkin' Donuts, Howard Johnson's Restaurant, Frisch's, Holiday Inn's entrance, and Kroger. There are outside booths at La Paloma and in the center of Southgate Shopping Center near First Federal. And we mustn't overlook the Heath Police Dept. Say "Hi" to Mike.

There are several other all night grocery stores which don't have pay phones, but may let you make a local, emergency call. Some of these are planning to install pay phones in the near future.

SHAW'S MUSIC MART

"YOUR MUSIC STORE"



ONLY THE BEST IN MUSIC
Peavey-Crate-Electra-
Alvarez-Yamaha-Hondo-
Kustom-Dimarzio-Bildjian
AND MORE



20% OFF
ANY SET
OF
STRINGS

coupon

1107 HEBRON522-4611

GETTING HELP

THE NEWARK DRUG FORUM is much more than the name implies. It was organized in 1969 by concerned citizens in an attempt to reach and help drug users at that time who were not likely to seek help from traditional mental health agencies. It has grown into an organization with salaried employees and a large volunteer staff, all of whom are extensively trained. Today it encompasses four components, some of which are often confused:

1. **Crisis Center:** as one component of the Newark Drug Forum, the Crisis Center deals with any kind of emotional problem including drugs, relationships, depression, loneliness and suicide. It provides an ear and the respect for the validity of your problem that you may not find elsewhere, no matter what it is. Phone 345-HELP, 24 hrs.
2. **Treatment:** Counseling is offered to persons with drug related problems (and their family members). This includes a court liaison program. Payment depends on ability to pay.
3. **Prevention and Education:** This provides speakers, training programs and workshops to schools and other groups and delves into some of the real problems behind drug and alcohol use: life skills, communication, self-esteem, responsibility, etc., and the commonality of such problems among drug users.
4. **Information and Referral:** This is a true community switchboard. They will try to direct you to the proper resource, whatever the question may be, from an emergency to a recipe or plane flight. Phone 345-5353, 24 hrs.

Whatever your problem may be, you are likely to find help or information at the Newark Drug Forum or its Crisis Center or Information and Referral, phone lines. Confidentiality is strictly enforced. There is also a toll free number from Pataskala to cover the western part of the county: 927-1441.

MIKE'S QUALITY PHOTOGRAPHY
BANDS
WEDDINGS
SPECIAL TIMES

Newark, Ohio

High Quality; Low Prices

(614)323-2771

FOOD

For a change of pace this month, I stopped at the Mother Earth Works at 373 Mt. Vernon Road. No, I'm not chowing down on herbs, spices and vitamins. They actually have a quaint, little luncheon area at the rear of the store where Cindy, a holistic expert, will prepare "with love" a delicious lunch of Chunky Chicken, Vegie-Licious, or Dairy Deluxe. These dishes feature fresh vegetables, cheese and pita bread. Follow it up with a thick, creamy Smoothy. They come in Blue-Banana, P-Nutty, Golden Nectar and Morning Eye Opener.

Much of the appeal here is the atmosphere. The aroma alone is enough to make you want spend the day. But it is also a real learning experience just from being within earshot of a conversation with a customer. These people are knowledgeable and very sincere in wanting to help with any problem that falls under nutrition or holistic thinking. There is a deep interest in natural childbirth, herbs, vitamins, love, and anything natural.

So stop by for lunch and have a real treat. Tell them Dan sent you. Lunch times are 11 am - 2:30 pm. They also prepare them to go.
345-1470

PENNSYLVANIA STATION

OPEN 7:00 a.m.

SUN. LIQUOR

25 E. WALNUT

Breakfast

LARRY

Lunch

MCWILLIAMS

Dinner

CONDUCTOR

345-6414

JUST DESSERTS

This month my sweet tooth led me to The Evergreens in Granville, which has long been known for its homemade desserts. I wanted to try the famous Red Velvet Cake.

It is four layers of ruby-red devil's food - yes, red - each separated by thick, buttery smooth layers of white frosting; a soft, moist, mellow, melt-in-your-mouth masterpiece. Stunning to behold, and it does go down like velvet.

It is really not new or original; a friend of mine had it in West Virginia years ago. The recipe is no secret either. In fact, The Evergreens sells a little recipe booklet. However, it is a real treat and something you should try.

GETTING PHYSICAL

THE LICKING WHEELMEN, soon to be known as the LICKING COUNTY BICYCLE CLUB, was organized in 1973 by the late Pat Wilson, his son Jeff, and several other local cyclists. It is affiliated with the League of American Wheelmen, the Ohio Bicycle Federation and Bikecentennial (an organized trail across the U.S.).

If you are into bicycling, now's the time to get involved. Annual dues of \$3/individual or \$5/family entitle you to a monthly newsletter which lists coming events and ride schedules, and to take part in the weekly rides. There are Saturday morning rides to nearby towns for breakfast, Sunday afternoon tours around the county, and shorter Thursday evening rides during Daylight Savings Time. The group also often rides to area festivals such as the Glenford Steam Show and the Granville 4th of July celebration.

All rides start and end at the Holy Trinity Lutheran Church, W. Main at Williams St., where the meetings are held at 7 pm on the 2nd Tuesday each month.

The largest annual event is the Land of Legend Century Ride during the Land of Legend Festival on Jun 18. Routes are marked with arrows, maps are provided, and a picnic lunch is available at the half-way point. For information call Fred Eberts, Pres. 345-8285.

NEWARK CITY BIKING LAWS

- *Must sit on the seat
- *Do not carry any packages that prevent you from keeping at least one hand on the handlebars
- *Do not attach your bike to any other moving vehicle
- *Do not ride more than two abreast in a single lane, except trails designed exclusively for bicycles
- * Bikes must have a bell or other signal audible from at least 100 ft., except no sirens or whistles are allowed.
- *All bicycles in the City must be registered and licensed with the Police Community Relations Bureau. This is FREE

- *Any bicycle found in City without a legible license tag or serial no. shall be impounded until proper ownership is established
- *No person shall place a bicycle other than in an upright position upon any sidewalk abutting the inside or outside of The Square

NEWARK ATHLETIC CLUB

2040 CHERRY VALLEY RD.
(ACROSS FROM BIKE PATH)

BIKE RENTALS
TANDEM & SINGLE

M-F 8-9 SAT-SUN 9-4
522-3169

Newark/Heath is well equipped for its avid bicyclists, and the numbers are growing. There is a trend toward physical fitness and the great outdoors, and bicycling is one of the most popular outlets for this need.

One established trail in town starts at Moundbuilder's Park at Union St. and zig-zags north through the YMCA Park and on up King Ave. It passes Johnny Clem school and stops at English Ave. behind the Heritage Green Apartments.

Another trail begins in Heath at the end of W. Main St. It runs north to Cherry Valley Rd. and follows Raccoon Creek into Granville. This provides about six miles of asphalt path suitable for biking, jogging, roller skating, or just walking. It also has distance markings painted on the pavement. This path provides gorgeous scenery over its whole length. Try a picnic lunch and make a day of it.

To the east at Black Hand Gorge is a third trail called the North Central Bikeway. It is over four miles long and will eventually be part of a 110 mile trail linking Mt. Gilead to McConnelville. This trail, too, is especially scenic with woods and wildlife.

So, you've got no excuse. Even if you don't own a bike, you can rent one at the Newark Athletic Club on Cherry Valley Road, right beside the trail.



BRANDY

BICYCLE TRIVIA

Eugene McPherson of OHIO STATE UNIVERSITY was the first bicyclist to cross the U.S. in less than 3 weeks, peddling from Santa Monica to N.Y. City in Sept., 1949. He went 3,054 miles in 20 days, 4 hrs., 29 min.

Bicycles courtesy of
Mound City Cycle,
S. 21st St., Newark

MOVIES

Remember that movie you wanted to see, but didn't make it to the theater until it was too late? Well this may be the answer. Did you know you could rent almost any movie from the Video Palace? Often there is only a 5 or 6 week lag from its original release before it is available on video tape. For instance, they now have Dudley Moore's new love story, Love Sick. Or try Best Friends with Goldie Hawn and Burt Reynolds, or the classic Camelot with Richard Harris and Venessa Redgrave. Other favorites include Poltergeist, The Lord of the Rings, On Golden Pond, Arthur and Rocky III.

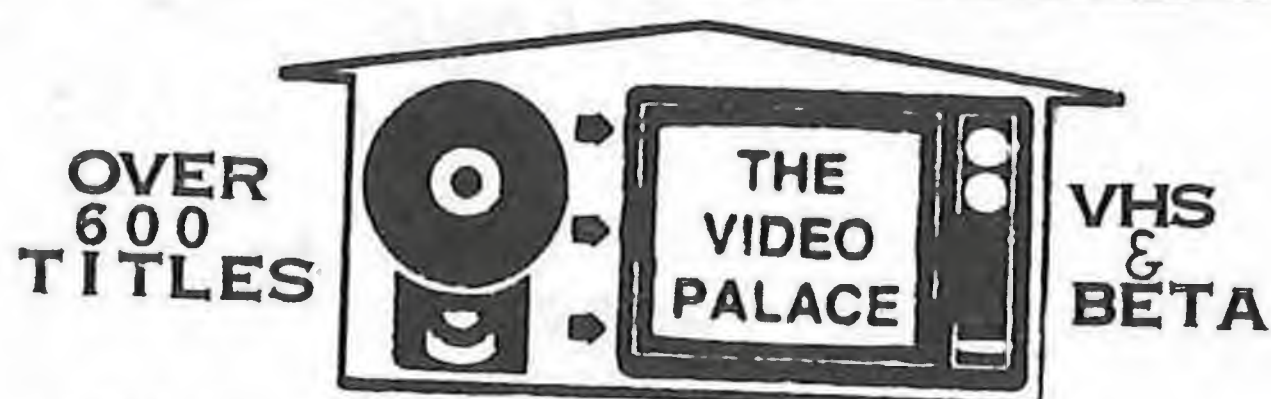
What's that? You don't own a video tape machine? You can rent one with a film for \$19.95 for one night, plus a deposit. Great party idea! So if you missed that movie, there's still hope.

FOR SURE

The Cottage Inn has become the Paddlewheel under new management

Leatherwood has become H.C. Blazer

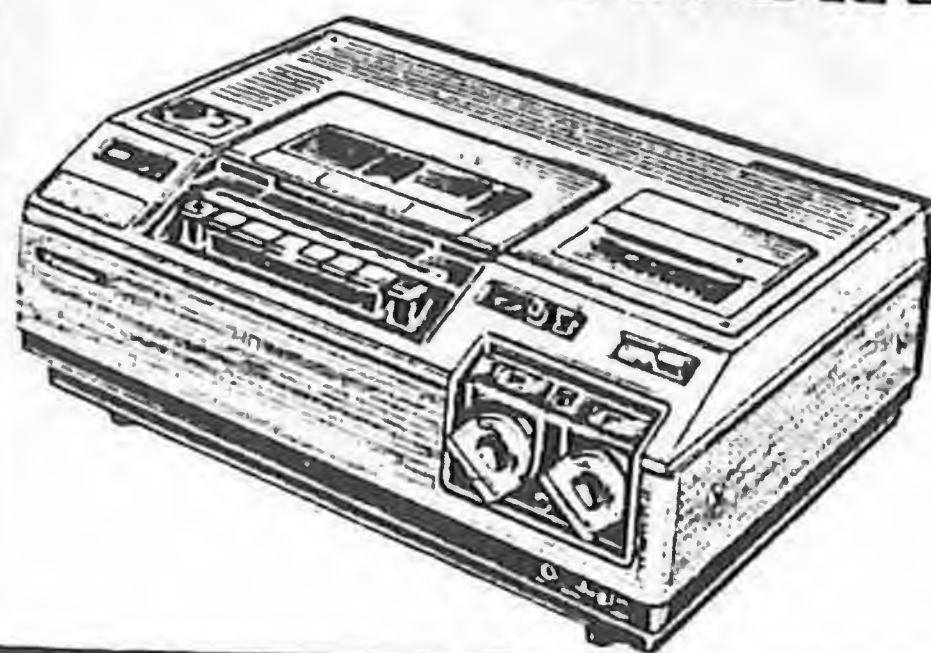
Watch for the
SCENIC RAILROAD



1232 N. 21st., Newark, Oh.
(614) 366-7701

WE RENT AND SELL MACHINES

OPEN MONDAY - SATURDAY
10 - 9 PM
SUNDAY 12 - 6



ATARI
VIDEO GAMES



CLUB NEWS

If you're into computers (and who isn't in one way or another these days?), look into the LICKING COUNTY MICRO-COMPUTER CLUB. You do not need to own a computer or even be a member of the group to attend a meeting. Just drop in and see if you would be interested. Membership ranges from beginner to expert and costs \$12/year, which includes a newsletter. It is a very informal group, meeting at each other's homes on the first Sunday of each month. For information, call Earl, 522-2311.

the arts

THE LICKING COUNTRY ART GALLERY at 391 Hudson Ave. will feature the 9th Annual Juried show from June 4-29. It encompasses the media of painting, sculpture and photography. Represented are artists from six counties: Coshocton, Fairfield, Perry, Knox, Licking and Muskingum.

Also at the Gallery is the continuation of the exhibit by Alan Gough entitled "Ohio Country" in June. It is "a series of oil paintings and sketches reflecting the four seasons . . . the timeless aspect of nature in rural regions and effect of people on the lands." Gough is a resident of southern Ohio. He has exhibited at the Art Institute of Chicago, National Academy of Design, Pennsylvania Academy of Fine Art, Smithsonian and elsewhere, and his work is included in a large number of collections nationwide. Gallery: 349-8031.

CLASSIFIED ADS

RATES: \$2 for up to 3 lines (approx. 15 words). Add'l lines 75¢ ea. Accepted at discretion of publisher and should fit the theme of SOUNDBOARD. Must be received with payment by 15th for next issue. Mail to:

SOUNDBOARD
P.O. Box 663
Newark, Oh. 43055

Individuals only. For business ads, contact publisher.

For the Road

Bell Helmet, Star II

\$50. 522-1566

* * * * *

Simpson Helmet, Model
30. one yr. old. \$150.
522-1566

Arts

Artistic sign painting
by experienced artist.
366-1294

Personals

Female room-mate wanted.
\$110/mo. incl. util.
Bring furniture. Julie,
587-3726

The Guitar Barn

COMPLETE STRINGED INSTRUMENT
REPAIR & RESTORATION

24 N. MAIN
THORNVILLE, OHIO 43076

HANDMADE
GUITARS AND MANDOLINS

LEE CRADER
(614) 246-5855

SOUNDBOARD CAN BE FOUND FREE OF CHARGE AT THE
FOLLOWING LOCATIONS:

BAND MUSIC CENTER

BARNEY'S

BEECHRIDGE LOUNGE

BULL'S EYE

BUXTON TAVERN

COFFMAN MUSIC, LANCASTER

CORRAL COUNTRY SALOON

DOWN UNDER

HOWARD JOHNSON'S

KRANER'S CORNER

LEVIN PARK

LOONEY LARRY'S

MARTIN MUSIC CENTER

MID TOWN TERRACE MOTEL

MOTHER EARTH WORKS

MUSIC MART, MOUNT VERNON

NATIONAL TRAILS SALOON

NATOMA

PADDLEWHEEL

PENNSYLVANIA STATION

PUFF & STUFF

SHAW'S MUSIC MART

SOMEWHERE ELSE

SUNDOWNER

T-SHIRT DESIGNS UNLIMITED

THRESHOLD AUDIO

UNIVERSITY INN

VALLEY LANES

VIDEO PALACE

YESTERDAY'S PUB

THE EVERGREENS, GRANVILLE

DOOLEY'S RESTAURANT, MARNE

OHIO UNIVERSITY, LANCASTER

OHIO UNIVERSITY, ZANESVILLE

R & R ENTERTAINMENT, 22ND ST.

GLASS MUSIC CENTER, COSHOCTON

R & R ENTERTAINMENT, CHURCH ST.

HENDERSHOT'S COUNTRY STORE, PERRYTON

RITE-AID DISCOUNT PHARMACY, PATASKALA

MAC'S ICE CREAM AND SANDWICH SHOP, PATASKALA